



Faith · Fun · Friendship

← 1955  2015 →

Sky Ranch

SUMMER CAMP · FAMILY CAMP · LAUNCH CAMP · LEADERSHIP CAMP
ROODED CAMPS & CLINICS · CHURCH CAMP · RETREATS & CONFERENCES · WILDERNESS
SCHOOL PROGRAMS · SKYMOJMS · SKYDADS · PARENT CHILD WEEKENDS

CAMP4LIFE



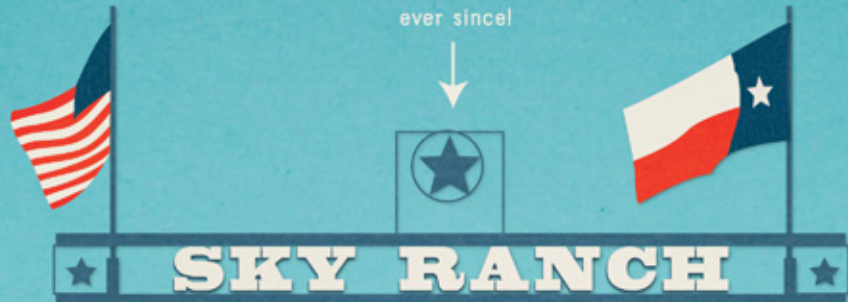
SKY|RANCH

www.SkyRanch.org | 903.266.3300 | 800.962.2267



1955

The year Sky Ranch was founded by the late Mel Brewer. Sky Ranch has been creating activity-packed, character-building, Spirit-filled summers ever since!



1975

The year that Sky Ranch moved from Denton, TX to its current location in Van, TX.

2015

As we celebrate 60 years of impacting lives forever, from our roots in 1955 to today, we pause to look at what God has done, what He is doing and what He will do.

Serving just 66 day campers that first summer, we now have the privilege to minister to thousands of overnight campers each summer - and more than 60,000 people each year through our combined programs across 3 states.

God did not need us to do His work at Sky Ranch; we just have the blessing to be a part of It.

Please join us as we Remember, Rejoice and Respond.



22% The number of young adults hired to be Sky Ranch counselors from the number of young adults that applied. Our staff is carefully recruited, screened and selected.

2 weeks The length of the Sky Ranch comprehensive Counselor Training Program to prepare them for this most important role with your campers.

24/7 The time campers and counselors are together. Different from most camps, at Sky Ranch, the same group of counselors stay with their campers the whole week of camp, rather than handing them off from counselor to counselor for various activities. This intentional together-time allows for lasting relationships to be built between camper and counselor.



ONE COUNSELOR



ONE CANOE



ONE CONVERSATION



OUR COUNSELORS ARE THE *Heart* OF OUR CAMP!



The Sky Ranch



All your campers may realize is that they're having a **BLAST**, but under the surface, critical character building is taking place.

Sky Ranch has developed the Life Map, an intentional plan that guides us in investing in and building programs and activities for your children, with the goal of helping them become the young adults that are the full expression of everything God created them to be.

The Life Map is based on a framework of 4 worldview questions:

- 1 WHO DO YOU TRUST?
- 2 WHO ARE YOU?
- 3 WHAT IS REAL?
- 4 WHO IS JESUS?

We focus on one question every year, then start the process over. Conversations take place in formal Bible study times, on walks by the lake, or over a milkshake. This is the power of the Life Map. It is a consistent message delivered in creative, kid-friendly ways by a parade of Godly role models. We set the table. We ask the questions. We plant the seed, nurture it, and give it water.

But we never forget that "neither he who plants nor he who waters is anything, but only God, who makes everything grow."

1 Corinthians 3:7

The Life Map consists of 3 Phases as your child goes and grows through the program:

PHASE 1



LEARN

Developing character and faith



Youngest camper through early teens

PHASE 2



EXPERIENCE

Putting faith into action



Teenagers

PHASE 3



BECOME

Contributing through servant leadership



College aged through young adults



THE LIFE MAP = THE PLAN BEHIND THE FUN AND THE FUNNY

It is a series of experiences and environments designed to capture kids early and raise the standards in their life, as we feed their hunger for knowledge, community, and purpose. It is meant to be one consistent message in a world of constant change.

SUMMER CAMP

Sky 1-4 • Morph • Quest • Sigma

Faith • Fun • Friendship
CAMP4LIFE

The focus is on the camper at Sky Ranch - from the safe, nurturing environment for a Sky 1 camper, to encouraging Sky 2 campers to expand their horizons, offering the opportunity for Sky 3 to discover who they are, and to giving Sky 4 campers a week dedicated to developing and renewing relationships.

- Awesome activities
- Strategically planned curriculum
- Spiritual growth
- Opportunities for developing life-long relationships with counselors and friends

PHASE 1 LEARN

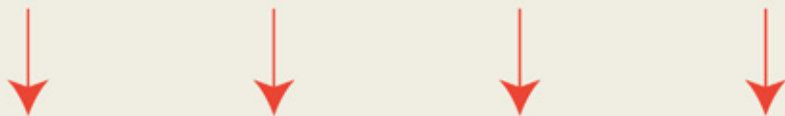
Beginning 2015, campers will be divided into programs by the grades they are entering.

Sky 1 GRADES 1-3 VAN, TEXAS

Sky 2 GRADES 4-5 VAN, TEXAS

Sky 3 GRADES 6-7 VAN, TX

Sky 4 GRADES 8-9 VAN, TX



PHASE 2 EXPERIENCE

Beginning 2015, campers will be divided into programs by the grades they are entering.

Morph GRADES 7-8 VAN, TEXAS

Quest GRADES 9-10 VAN, TEXAS

Sigma GRADES 11-12 LAKE CITY, CO



COR LEADERSHIP TRACK

1 Corinthians 9:24-27

Campers enjoy all the fun activities of summer camp + deeper spiritual & character development. Ideally, each program in the leadership track is a two-year experience. Upon completion, each camper receives a reference letter from Sky Ranch, which can be used for:

- school service requirements
- scholarship applications
- other pursuits



90

Number of acres
Sky Ranch's private
lake encompasses



40,600

Splatter balls
shot per week



18,600

Jumps per week
on the
Jumping Pillow



3-PERSON GIANT SWING • ACTIVITY CENTER/GYM • ARCHERY • BAZOOKA BALL • BLOB
CANOES AND KAYAKS • CRACKER BARREL • CORD • CRAFTS • CRAZY POOL • GAGA • HORSES*
HUMAN MAZE • JET SKIS • JUMPING PILLOW • LASER TAG • CABIN CHALLENGES • MINI-GOLF
NATURE CENTER • NUKE 'EM • PAINTBALL* • PARTY POOL • RIFLERY • ROCKWALL • SKEET
SHOOTING* • SKYWALL • SPLATTERBALL • TORPEDO • BOAT PULL • WET WILLIE SUPER SLIDES
VERTICAL PLAYGROUND AREA: DUELING LADDERS, PENDULUM, & POLE • ZIPLINES

ACTIVITIES VARY BY SKY LEVEL AND AGE GROUP.

* ADDITIONAL FEE APPLIES.



CHAMPIONS RODEO PROGRAM

Young Riders ● Sky Fillies ● Champions Rodeo Clinic ● Elite Rodeo Clinic



Champions Rodeo Director:
Rope Myers
World Champion Steer Wrestler



Young Riders GRADES 2-7

Fundamentals Of Horsemanship

This is the perfect program for the young or inexperienced cowboy or cowgirl who is just beginning to learn the basics of rodeo competition. It's a FULL WEEK of summer camp fun, with a heavy emphasis on rodeo and horse activities.

Roping ● Barrel Racing ● Pole Bending ● Goat Tying

New for
2015

Sky Fillies GRADES 8-11

Advanced Horsemanship

For the young lady who has moved beyond Young Riders but still wants a full week of summer camp - The Fillies is the perfect option! This program provides five full mornings of horses, including more in-depth Bible studies and opportunities to serve with younger campers. In addition, The Fillies will be featured stars in the weekly Sky Ranch rodeo.

Trick Riding ● Drill Team ● Roping ● Goat Tying ● Barrels/Poles

Champions Rodeo Clinic

GRADES 4-12

Summer Camp + Rodeo Clinic = Champions Rodeo

4-day, 3-night camp focused on developing rodeo and life skills in a positive environment.

Roping
Barrel Racing
Pole Bending
Breakaway Roping
Goat Tying



This clinic is for young rodeo athletes ready for more intensive rodeo training.



Team Roping
Calf Roping
Steer Wrestling

Elite Rodeo Clinic

HIGH SCHOOL THROUGH EARLY COLLEGE AGES

The Most Talented Rodeo Athletes In The Country

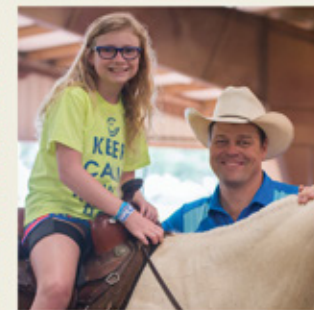
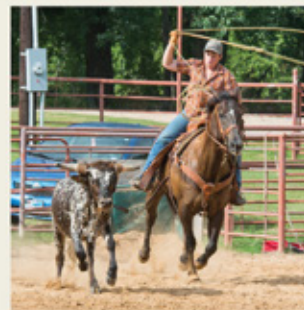
4-day, 3-night event focused on extreme rodeo training and expert instruction from some of the best pros in the business. In addition to spending hours in the practice pen with experienced, professional, and positive instructors, Elite Clinic students participate in classroom sections, with topics such as:

Finances for Rodeo & Beyond Rodeo 101 Marketing Yourself The Mental Edge

Past instructors include:
Stran Smith, Cash Myers,
Tuf Cooper, Joey Bell,
Blair Burk, Glenn Clark,
David Key, Rope Myers

Steer Wrestling
Calf Roping
Team Roping
Breakaway Roping

ONLY THE TOP 20 APPLICANTS FOR EACH EVENT WILL BE INVITED TO ATTEND.
FOR MORE INFORMATION OR AN APPLICATION, PLEASE EMAIL ROPEM@SKYRANCH.ORG



LAUNCH CAMP

Entering kindergarten through 6th grade • Various Locations

MON TUE WED THU FRI

It's the perfect option for kids who aren't quite ready to sleep over for a week but want to experience the heartbeat of Sky Ranch. Parents drop off campers in the morning and pick them up each afternoon. Trained, caring counselors lead five fun-filled days of activities and spiritual investment.

CHECK OUR WEBSITE AFTER MARCH 16, 2015 FOR SPECIFIC DATES, LOCATIONS & INFORMATION - SKYRANCH.ORG



FAMILY CAMP

Lake City, Colorado

8,346 ft.
Elevation at our Sky Ranch Ute Trail Family Camp, nestled in Colorado's Rocky Mountains.

74.8°
Average high temperature for June, July, and August in Lake City.

Refresh your family's spiritual journey and strengthen relationships with something for every member of the family!

In the beauty of God's majestic creation.

An environment designed to create intentional and purposeful interactions between parents and children.

A wonderful escape from the heat of summer and the crazy pace of life.



PARENT CHILD WEEKENDS

Join Sky Ranch for these meaningful memory-making weekends

These weekends are open to campers of all ages, but most of the programming is geared toward children ages 6-12.

MOTHER DAUGHTER



FATHER SON

FATHER DAUGHTER



MOTHER SON

SKYMOMS

Events • Education • Parenting Tips



Linda S. Paulk, Lisa Clark & Tori Miller



In the same way that Sky Ranch invests in the spiritual development of each child, SkyMoms feeds the heart and character of the caretaker - helping mom to better face the daily challenges and opportunities of raising Godly kids.

skyranchskymoms.blogspot.com

6,517 Average number of parents coming through our gates each summer to drop off and pick up their campers. These are our SkyMoms and SkyDads.

SKYDADS

Experiences • Resources • Relationships



Rope Myers, Skeet Tingle & John Morgan



By popular request, we have just launched a SkyDads ministry. SkyDads supports fathers in their role of modeling our Heavenly Father's love to His children, helping dads be Godly character leaders who will change their families, their children's schools, their communities and, ultimately, the world.

www.skyranch.org/category/sky-dads/

Q: What do camper families have to say about their Sky Ranch experience?

A:



It has been one of my daughter's greatest joys to grow in this arena. She and her horse grew so much at Young Riders and have now bonded under more challenging conditions, through Champions Rodeo Clinic.

Thanks for pouring into our son and making all of us feel like Sky Ranch VIPs from the moment we arrived until the moment we picked him up and returned home. You do it all so well. Sky Ranch.



Mother Daughter weekend was a great time to focus on each other. I didn't clean, cook, or carry my iPhone & had all my time for her. I loved it!



He came home with a new appreciation for his home and family, probably from the experience of being away from us. He seemed to have more ownership in his faith and more maturity about it. I can't wait to send both of my boys next summer!



Every year my kids come back encouraged to continue the Christ-centered life we live here at home. They make new friends, appreciate being around like-minded people and view the counselors as role models. Both of my kids have now expressed an interest in returning as counselors one day.



Every year he comes back with more confidence than the year before. He also learns compassion, friendship, and a closer relationship with God.



Sky Ranch Family Camp is all about taking a break from the crazy fast-paced world we live in and spending focused time on strengthening the family bond and bringing you and your family closer to God.



MEET OUR MINISTRY TEAM



Linda S. Paulk & Family

President and CEO

Linda accepted God's call to Sky Ranch in 2007. Prior to serving at Sky Ranch, Linda spent 20 years in the corporate world. Linda was President and CEO of Snelling and Snelling, Inc. one of the nation's largest staffing firms. Her passion is to help children tap into God's greatness within them, equipping them with Spiritual Truth to grow into Godly character leaders. She is a recognized speaker and leader in Christian Camping and was awarded "Texas Women," honoring women who have blazed trails in their respective fields. Linda's zeal for helping others goes far beyond business, as she serves on boards that focus on strengthening families, providing hope through Christ, and promoting patriotism within our youth today. Linda is married to her high school sweetheart Bob, who is a Retired Captain in the Naval Reserves. Linda and Bob are blessed with a daughter Ashleigh and a son Bobby. Ashleigh is married to Ben Poque. Ashleigh and Ben have two children, Jackson, 6 and Presley, 4 and live in McKinney, TX. Bobby lives in Houston and works in the medical field.



John Morgan

with wife Amanda, Reeci, Boston & Charli
Director of Summer Camp, Texas Site



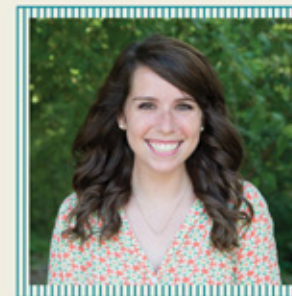
Clinton Pfalser

with wife Jill, Cannon & Nixon
Summer Operations Manager



Chrisleigh Jones

Summer Camp Manager



Allie Corban

Summer Camp Manager



Max Heller

Summer Leadership Camp Manager



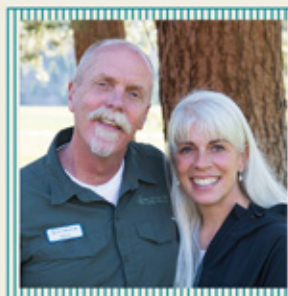
Rope Myers

with wife Candice,
Layton, Holden, Tierney & Storey
Champions Rodeo Director



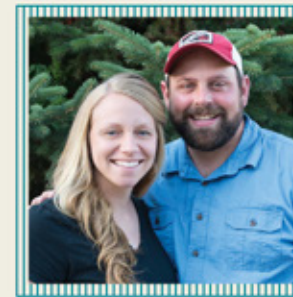
Kenli Edwards

Launch Camp Manager



Skeet Tingle

with wife Angie
Ute Trail & Family Ministries Director



Kyle Hess

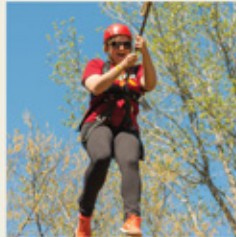
with wife Brittany
Family Camp Program Manager

RETREATS & CONFERENCES

SKY RANCH - VAN, TX



Serving groups up to **900** from August through May!



SKY RANCH CAVE SPRINGS - QUAPAW, OK



Serving groups up to **400** all year round!



OUTDOOR EDUCATION

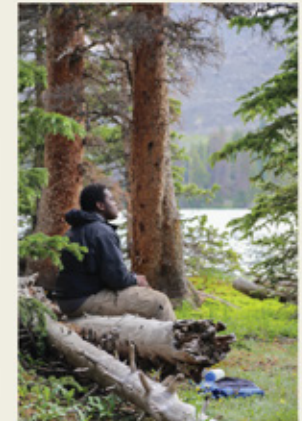
• Seriously Fun Learning •

Rigorous, experiential curriculum in the great outdoors makes learning *fun and effective!*



WILDERNESS

Led by Sky Ranch trained guides, your group will enjoy the beauty of God's creation as they bond over 5 to 6 nights on trail at our Colorado location.



Register Today!

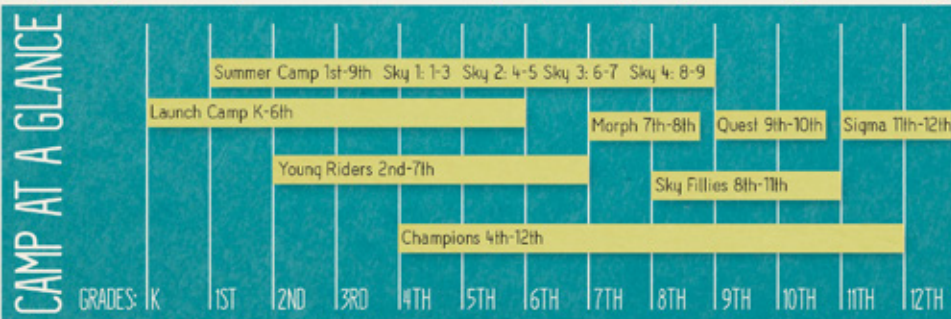
Summer Camp 2015 Session Dates:

Session 1	May 31–June 6
Session 2	June 7–13
Session 3	June 14–20
Session 4	June 21–27
Session 5	June 28–July 4
Session 6	July 5–11
Session 7	July 12–18
Session 8	July 19–25
Session 9	July 26–August 1
Session 10	August 2–8
Session 11	August 9–15

Summer Camp 2015 Pricing and Session Timing:

SKY 1-4, MORPH & QUEST Sessions 1 & 11	\$819
SKY 1-4, MORPH & QUEST Sessions 2-10	\$1,019
YOUNG RIDERS Sessions 1, 5, 11	\$1,019
SKY FILLIES Session 3	\$1,019
CHAMPIONS RODEO Session 9a: July 26–29 (boys) Session 9b: July 29–August 1 (girls)	\$455 plus \$100 for horse, if needed
SIGMA Sessions 1-2 through 9-10	\$2,138 + CO tax (includes transportation)
LAUNCH CAMP Sessions 1-11 Check our website after March 16, 2015 for locations.	\$269

Beginning 2015, campers will be divided into programs by the grades they are entering.



To Register, visit us online at www.SkyRanch.org
Call 903.266.3300 or toll free 800.962.2267



FAMILY CAMP \$2,950 + TAX FOR 1-BEDROOM CABIN
Sessions 1-11 \$3,550 + TAX FOR 2-BEDROOM CABIN
Additional fees apply for families larger than five members.



PARENT CHILD WEEKENDS \$195 PER PERSON
Mother/Daughter – November 14–16, 2014 & March 27–29, 2015
Father/Daughter – February 6–8, 2015
Mother/Son – March 20–22, 2015
Father/Son – October 24–26, 2014 & February 27–March 1, 2015



ELITE RODEO CLINIC \$495 plus \$100 for horse, if needed
December 28–31, 2014

SKYMOMS RETREAT \$125 per person
January 24–25, 2015

FAMILY CAMP WEEKEND \$600 per family
December 5–7, 2014





Leading youth and families to know and follow Christ



SKY | RANCH
TEXAS | COLORADO | DELAWARE

www.SkyRanch.org